



TURNTABLE

Volume 4, Number 1

January 2020

The NMRA's *Turntable* is a monthly publication which, like a railroad turntable, will lead you in a number of directions on the internet.

This e-publication is a collection of railroad and model railroad videos, podcasts, websites, and/or other information freely available on the internet that we think may be of interest to you. The NMRA claims no ownership of this information, nor do we endorse its creators or their websites. The *NMRA Turntable* will not promote individuals or their for-profit ventures.

A Members-Only Exclusive Clinic from Model Railroader Video Plus



[Olympic & Sand Creek - Episode 1](#)

MRVP's David Popp is back to building out his O scale (1:48) Olympia Logging Co. On30 layout, but this time he's got a little bit of extra help from MRVP Contributing Editor Gerry Leone! Watch as the two team up to construct new benchwork for an expanded townsite and interchange for the logging railroad. Of course you'll glean plenty of tips, tricks and insights as the fun unfolds in this first episode of the forthcoming Olympia & Sand Creek series available only on MRVideoPlus.com!



Make a Rolling Lift Highway Bridge

[Make a Rolling Lift Highway Bridge](#)

Jason shows us how he converted a Rolling Lift railroad bridge into a highway bridge for the port scene on his layout.



Model Trains Construction Video #5

[Model Trains Construction Video #5](#)

In this video, the presenter finishes the roadbed for the lower peninsula. He also starts benchwork on the left side of the peninsula wall.



Northern California F-Scale Narrow Gauge Tour

Northern California F-Scale NG Layout

A behind-the-scenes layout tour and interview with Ed Kornegay, owner of the famous Northern California Narrow Gauge Railroad, an F-scale (1:20.3) railway that has been featured in Garden Railways Magazine. Presented by the Sacramento Valley Garden Railway Society.

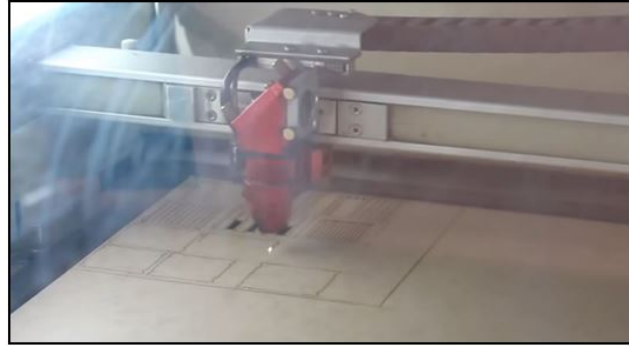


**Union Pacific Passenger Fleet "Lynn Nystrom"
from new manufacturer Railfanmodels!**

[UP Passenger Fleet "Lynn Nystrom"](#)

In this video, James reviews the "Lynn Nystrom" of the Union Pacific Passenger Car fleet made by Railfanmodels, a new model railroad manufacturer!

Podcast Interviews

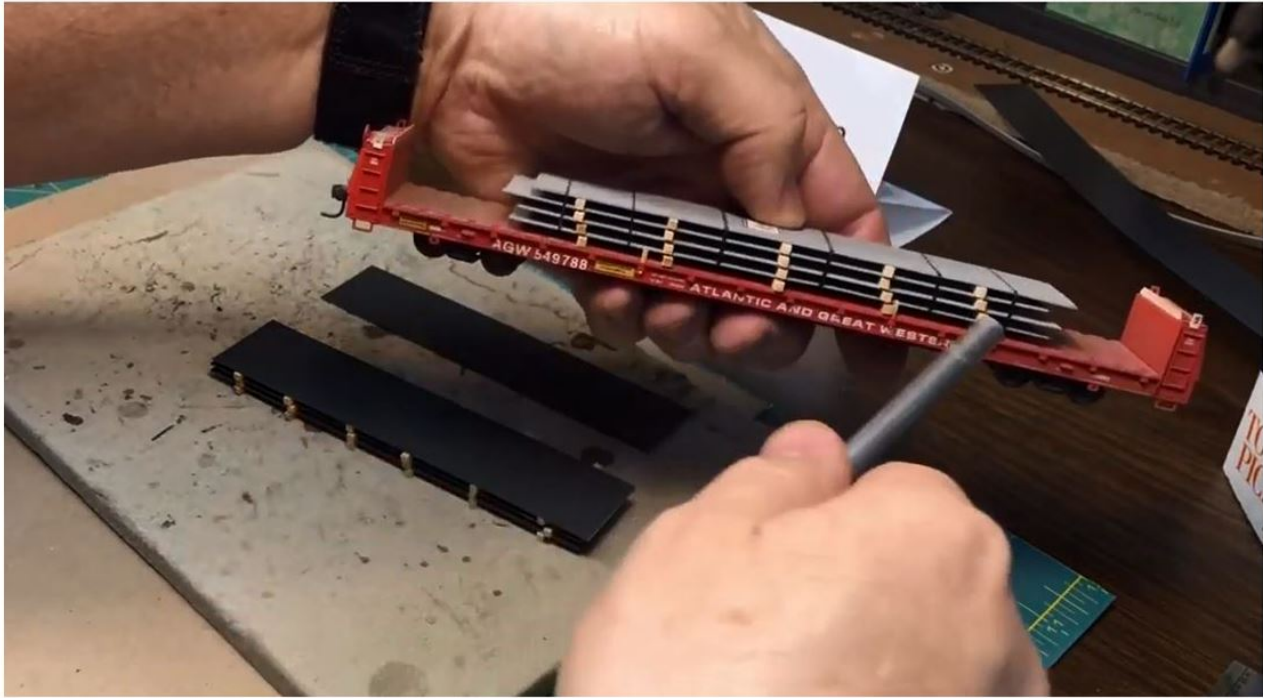


Model Railway YouTube Community Group Interviews Justin of Scale Model Scenery

[Scale Model Scenery Interview](#)

MRYGC were kindly invited to Scale Model Scenery to take a tour of the facility. They filmed an interview with Justin who was very candid with his answers. They also had the opportunity to see and film the first cutting of a kit that SMS had just announced.

Best of the Rest



Steel Mill Flat Car Loads

[Steel Mill Flat Car Loads](#)

This video shows how Roger builds simulated plate steel mill loads for flatcars that are removable.



Bachmann HO Streamlined K4 w/WowSound

[Bachmann's Streamlined K4 w/WowSound](#)

A review of Bachmann's HO scale Streamlined Pennsylvania Railroad K4 Pacific equipped with WowSound.



Japan's Last Working Forest Railway

[Japan's Last Working Forest Railway](#)

Exploring what remains of Yakushima's four little known two foot six inch gauge forest railways which used efficient but dangerous methods and a constant gradient track to gravitate precious Cedar from the high mountains down to the coast.



N Scale OPS: Santa Fe Argentine Division

[N Scale OPS: ATSF Argentine Div.](#)

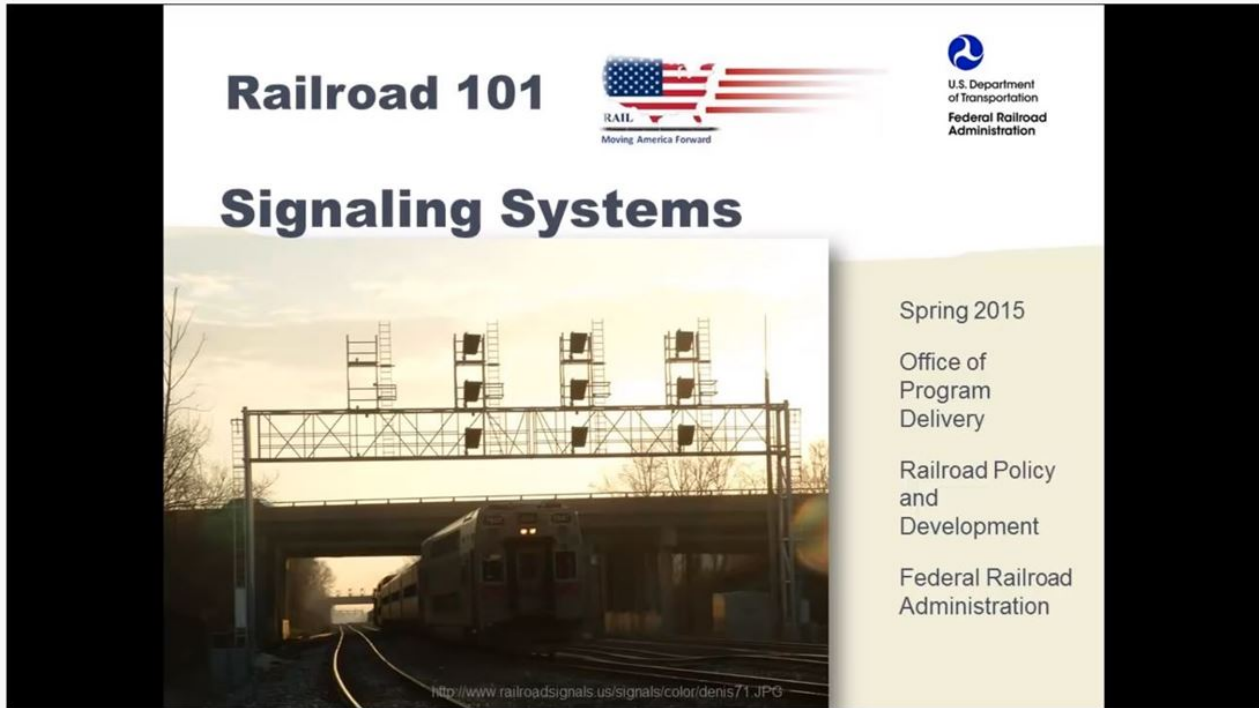
An operating session on the N scale layout of John Acheson known as the Santa Fe Argentine Division. This is the first of three parts showing this operating session.



Onboard Camera Test

[Onboard Camera Test](#)

Testing a new camera mounted on a flat car being pushed by a steam locomotive around the layout.



Railroad 101—Signaling Systems

[Railroad 101 - Signaling Systems](#)

A webinar session produced by the U. S. Department of Transportation FRA on railroad signaling systems. While a little slow, there is lots of information on railway signals that is presented, and yes, I did listen to the whole thing!



A History of P&H Mining Equipment

[History of P&H Mining Equipment](#)

This video provides insight as to how P&H mining equipment, including traveling cranes in factories, has evolved over the years.

[NMRA Partnership Program](#)

The NMRA Partnership Program is a member benefit that truly has a tangible payback. We've partnered with model railroad manufacturers of all sizes, giving them exposure on our website in return for receiving generous discounts for NMRA members all year long. Some provide members with special codes, others prefer a phone or email order, but all appreciate the additional business from our members. And of course, our members appreciate the extra savings...savings that can actually pay the cost of NMRA membership! Be sure to check back often as new Partners are being added all of the time.

[NMRA Partnership Program](#)

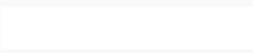
[Division Business Car](#)



Building a Better Bug

Featured in the *Division Business Car* Column appearing in the December, 2019 issue of *NMRA Magazine*.

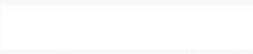
Learn how you can kitbash a Bachmann HO Scale Doodle Bug into a more compact version and install a Tsunami 2 DCC sound decoder, too!



Sante Fe Railroad

Featured in the *Division Business Car* Column appearing in the December, 2019 issue of the *NMRA Magazine*

Take a virtual tour of Rick Stern's HO scale Santa Fe Railroad. Rick is modeling the Southern California area on his layout in the steam to diesel transition era.



TOWARDS PAPERLESS



Going Paperless

Featured in the *Division Business Car* Column appearing in the December, 2019 issue of *NMRA Magazine*.

OPERATIONS Read about a way you can eliminate most of the paperwork from your operating sessions.

[Division Business Car](#)

The *Division Business Car* column appears in even-numbered months in *NMRA Magazine*. It's loaded with great modeling ideas, plus useful information that can help make your Division, Region or 100% NMRA Club even better. The information comes from articles published in Region, Division, and club newsletters. The best of these articles are posted on the NMRA website. You can read the entire archive, from as far back as 2011 right up to the latest posting, by clicking [here](#).

Don't forget to visit the [Partnership Program](#) page on our website to get great deals and discounts!

Previous issues of the *NMRA Turntable* are available on the Turntable Archives page. You must

first log in as a member at: nmra.org After you are in the members-only section, then hover over Publications on the menu bar, then *NMRA Turntable*, and then click on one of the list of back issues.

Editor: [Paul V. Voelker](#)

Executive Editor: [John Stevens](#)

The NMRA Turntable is an official monthly production of the National Model Railroad Association, Inc. Publishing Department ([Don Phillips](#), Manager). Its purpose is to introduce NMRA members to a selection of instructional videos and online publications that they may find of interest. If you know of an NMRA member who is not receiving this mailing, please direct them to [here](#) to update their email address. If you no longer wish to receive these mailings, please don't mark them as SPAM. Instead, click the Safe Unsubscribe link at the bottom of this page. ©2017 National Model Railroad Association, Inc., P.O. Box 1328, Soddy Daisy TN 37384.

STAY CONNECTED:

